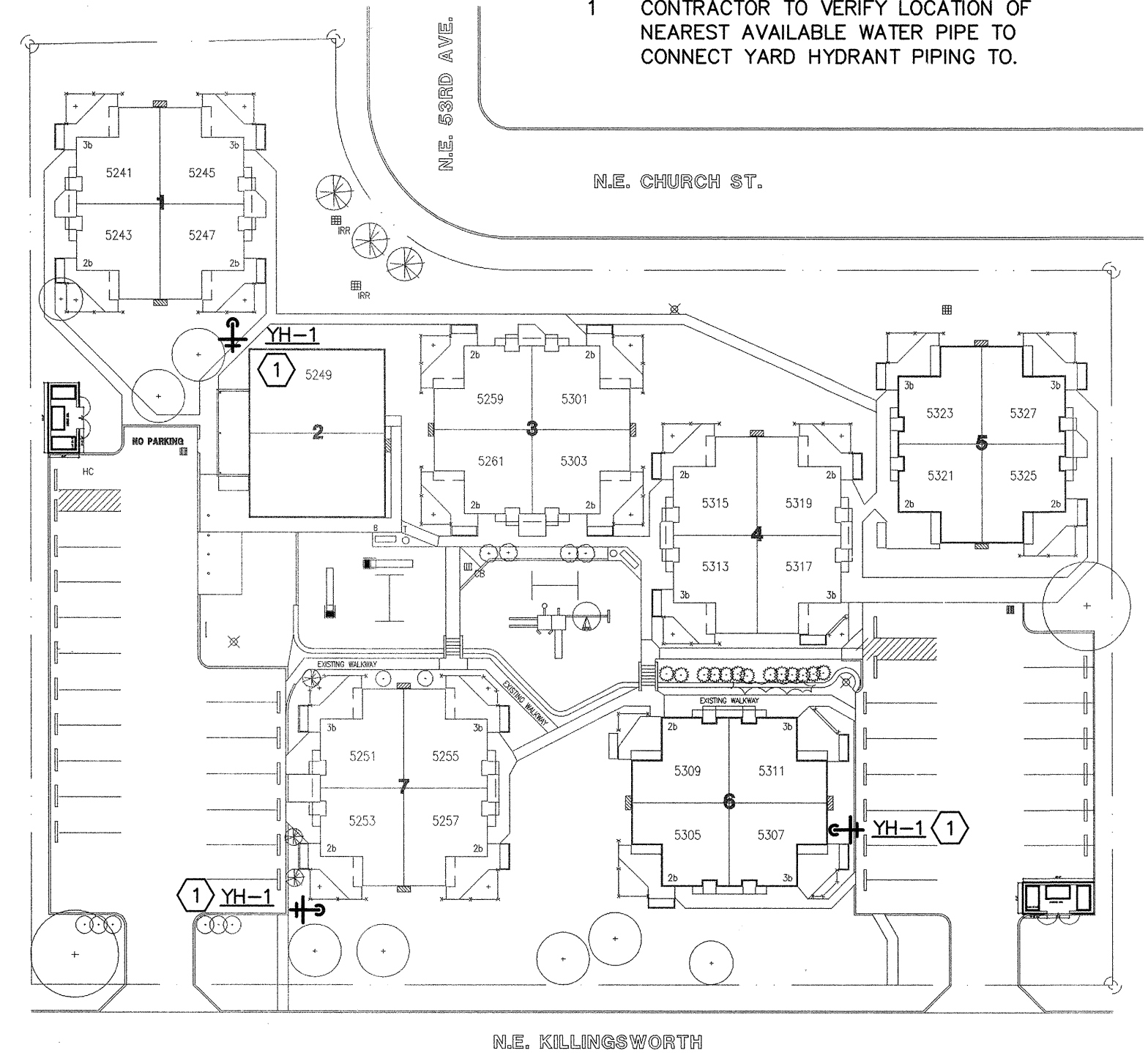


1 SITE PLAN - EASTWOOD - PLUMBING
 SCALE: 1"=40'-0"

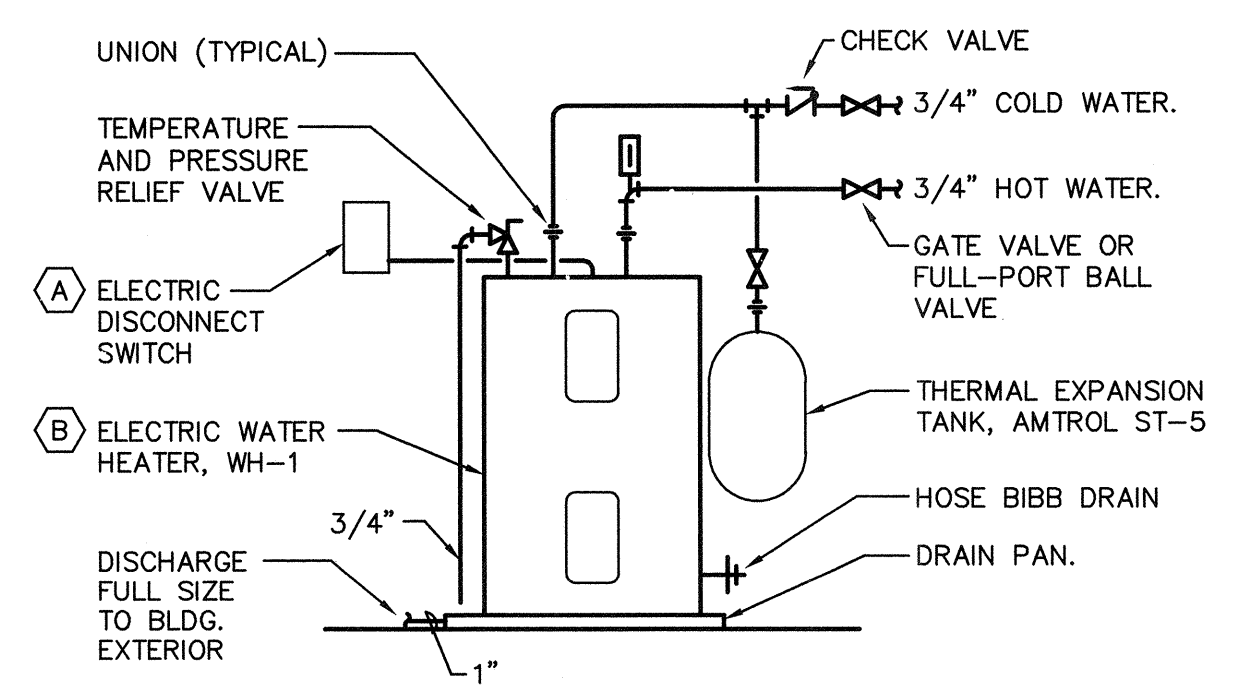
SHEET KEYNOTES
 1 CONTRACTOR TO VERIFY LOCATION OF NEAREST AVAILABLE WATER PIPE TO CONNECT YARD HYDRANT PIPING TO.



2 SITE PLAN - CARLTON - PLUMBING
 SCALE: 1"=40'-0"

PLUMBING FIXTURE SCHEDULE - UNITS

SYMBOL	DESCRIPTION	CONNECTION			
		W	V	CW	HW
SHV-1	BATH/SHOWER VALVE: C.P. METAL, SINGLE HANDLE, PRESSURE BALANCE, INTEGRAL VOLUME CONTROL, ADJUSTABLE LIMIT STOP MOEN 8320	2"	1-1/2"	1/2"	1/2"
ET-1	EXPANSION TANK: 2 GAL. CAPACITY, WELDED STEEL CONSTRUCTION, DIAPHRAGM TYPE, SEPARATE WATER RESERVOIR, PRE-PRESSURIZED, IAPMO CERTIFIED. AMTROL ST-5 REMARKS: INSTALL PER MANUFACTURER'S RECOMMENDATIONS.	---	---	SEE DWGS	---
L-1	FAUCET: LEVER HANDLE TYPE, 2 IN. CENTERS, C.P. METAL 2.2 GPM AERATOR, TEMPERATURE LIMIT STOPS, METAL POP-UP DRAIN, CHROME FINISH. MOEN 8465 FITTINGS: 1-1/4 IN. BY 1-1/2 IN. P-TRAP. SUPPLIES AND STOPS. FOR ADA COMPLIANT. PROVIDE INSULATION KIT TO P-TRAP AND SUPPLIES. SEE SPECIFICATIONS.	1-1/2"	1-1/2"	1/2"	1/2"
S-1	KITCHEN SINK: SINGLE COMPARTMENT, 18 GAUGE STAINLESS STEEL, SOUND DEADENED, 33 IN. LEFT TO RIGHT BY 22 IN. FRONT TO BACK SELF-RIMMING, THREE HOLE, LK-35 CUP STRAINERS. ELKAY LR-3322; 7-5/8 IN. DEEP FITTINGS: SUPPLIES, STOPS, P-TRAP. CONTINUOUS WASTE. FAUCET: KITCHEN DECK/SINGLE HANDLE TYPE, 4 IN. CENTERS, 9 IN. SWING SPOUT, AERATOR. MOEN 7300	2"	1-1/2"	1/2"	1/2"
WH-1	WATER HEATER: ELECTRIC, 50 GAL., SIMULTANEOUS 4500 WATT SINGLE DOUBLE ELEMENT, 21 GPH AT 90° F RISE, 140 LBS. DRAIN VALVE, T & P VALVE. SET WATER HEATER TO 120°F A.O. SMITH PXHT 52 CONTRACTOR TO FABRICATE DRAIN PAN TO ACCOMMODATE SPACE	---	---	SEE DWGS	SEE DWGS
WM-1	WASHING MACHINE SUPPLY AND DRAIN: HOT AND COLD WATER PIPING BOTTOM SUPPLY CONNECTION WITH SHUT-OFF VALVES AND DRAIN RECEPTOR IN RECESSED METAL BOX. GUY GRAY FB200	2"	1-1/2"	1/2"	1/2"
YH-1	YARD HYDRANT: NON-FREEZE POST TYPE WITH GALVANIZED CASING ADJUSTABLE FLOW WHEEL LOCK HANDLE, STAINLESS STEEL UNDERGROUND CANNISTER AND NOZZLE WITH VENTURI ADAPTER. JR SMITH 5904	2"	1-1/2"	1/2"	1/2"

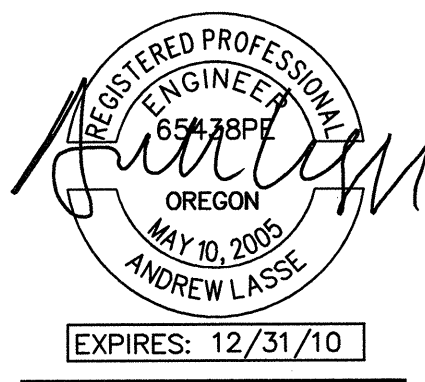


3 ELECTRIC WATER HEATER

- NO SCALE
- NOTES**
- (A) LOCATE DISCONNECT SWITCH WITH 50- FEET OF UNIT AND WITHIN CLEAR SIGHT OF UNIT.
 - (B) PROVIDE SEISMIC SUPPORT AT ONE-THIRD AND TWO-THIRDS.

PLUMBING SYMBOL LIST

- * This is a standard list and not all symbols and abbreviations may be used.
- | | | | |
|--|---|-----|------------------|
| | VALVES
VALVE, GENERAL | (E) | EXISTING |
| | FITTINGS
PIPE RISE | GAL | GALLONS |
| | PIPE DROP | IE | INVERT ELEVATION |
| | TEE UP ON PIPE | IN | INCHES |
| | TEE DOWN ON PIPE | NTS | NOT TO SCALE |
| | CONTINUATION | QTY | QUANTITY |
| | PIPING SYSTEMS
COLD WATER PIPING | (R) | RELOCATE |
| | HOT WATER PIPING | SIM | SIMILAR |
| | SANITARY PIPING BELOW GRADE OR FINISHED FLOOR | V | VENT |
| | SANITARY PIPING ABOVE GRADE OR FINISHED FLOOR | (X) | REMOVE EXISTING |
| | SANITARY VENT PIPING | L | LAVATORY |
| | | WC | WATER CLOSET |
| | | WM | WASHING MACHINE |
| | | SHV | SHOWER VALVE |



EASTWOOD CT. AND CARLTON CT. MODERNIZATION
 CARLTON - 5249 NE KILLINGSWORTH ST. PORT, OR 97218
 EASTWOOD - 18210 SE YAMHILL ST. PORT., OR. 97236
 PROJECTS NO. RFB 0170-06
 SITE AND DWELLING IMPROVEMENTS

SHEET TITLE
SYMBOLS, DETAILS SCHEDULES & SITE PLAN PLUMBING

DATE: JUNE 2010
 DRAWN BY: QB
 FILE NAME: CARLTON/EASTWD.

REVISIONS	DATE

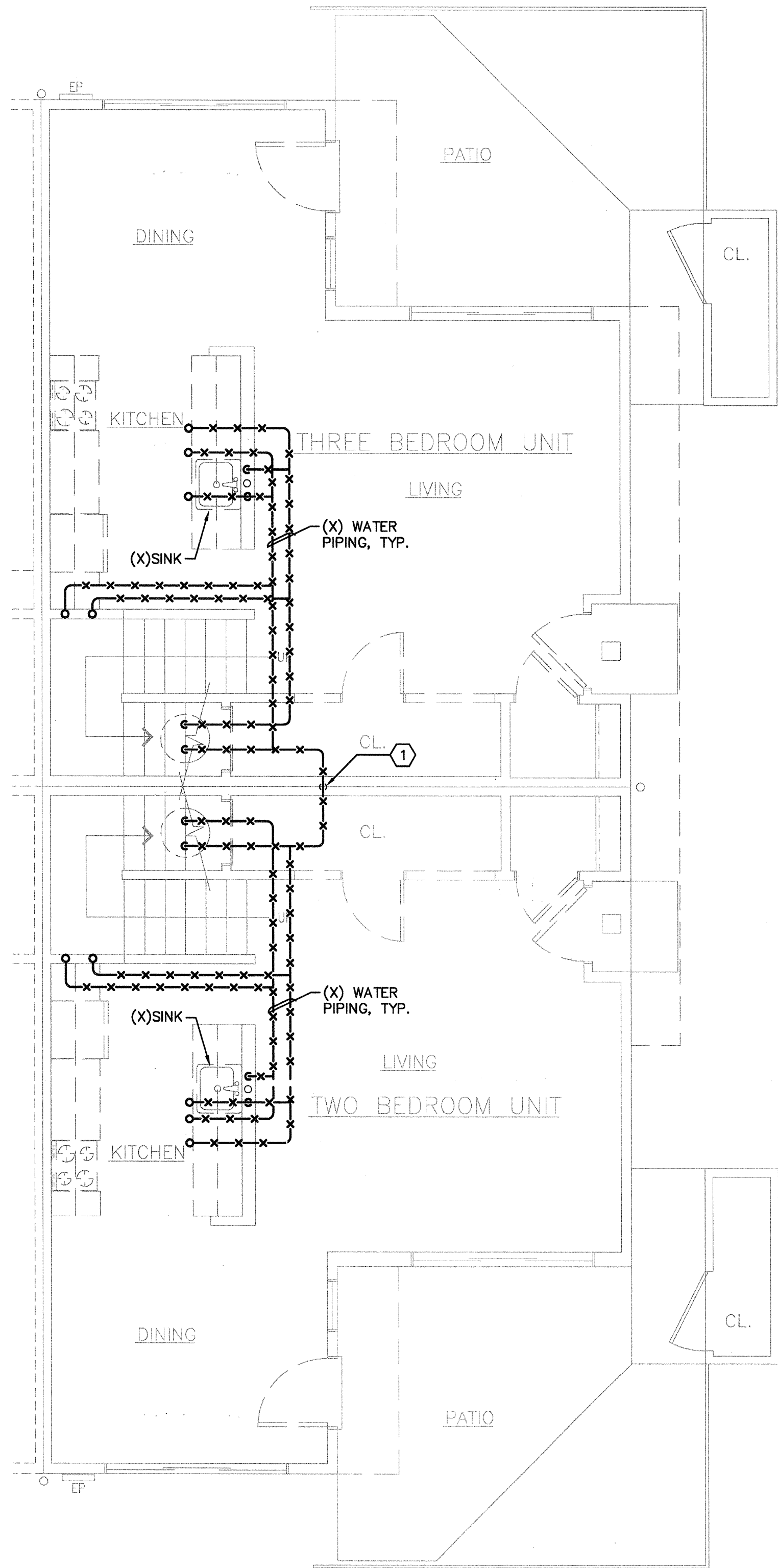
DRAWING NO.
P-1
 SHEET NO.
 X OF 1

SHEET INDEX

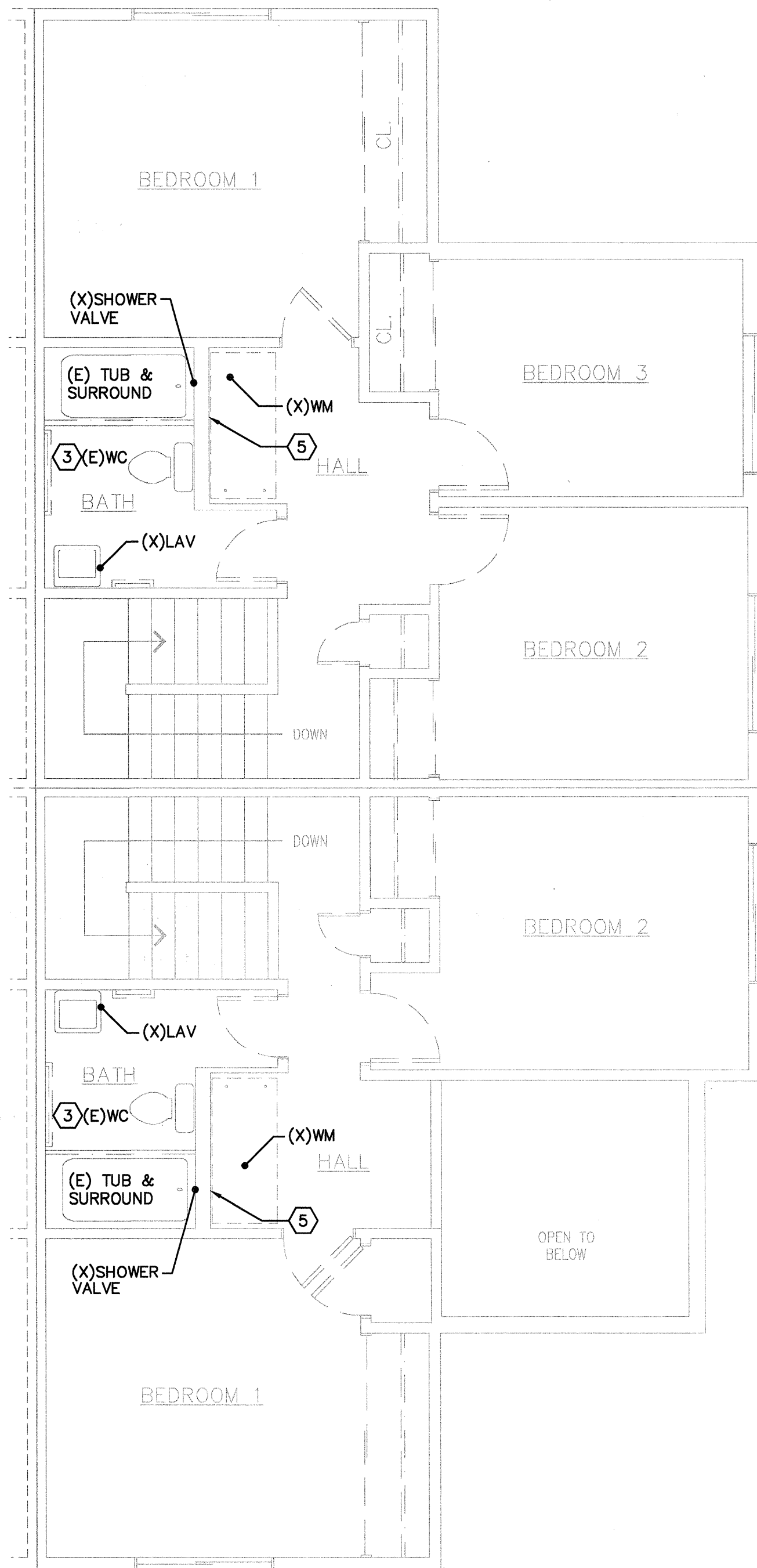
- P-1 SYMBOLS, DETAILS, SCHEDULES & SITE PLAN - PLUMBING
- P-2 DEMO & NEW FOURPLEX PLANS - PLUMBING
- P-3 DEMO & NEW DUPLEX PLANS - EASTWOOD CT. - PLUMBING
- P-4 DEMO & NEW ADA UNIT PLANS - EASTWOOD CT. PLUMBING

PROJECT 2010-0047
 CONTACT CHRIS SCOTT

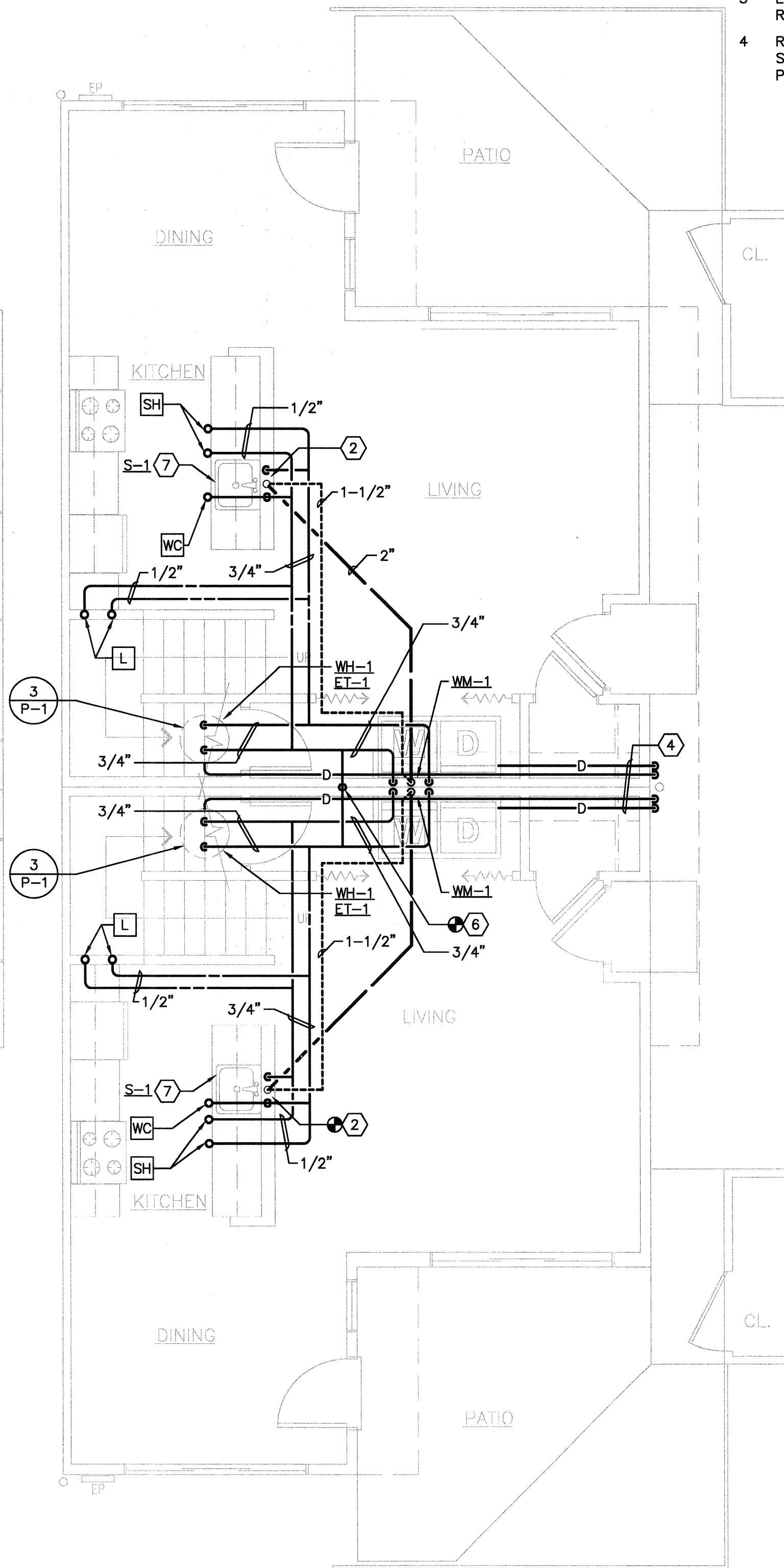
 706 SW Third Avenue
 Suite 400
 Portland, OR 97204
 TEL 503.382.2266
 FAX 503.382.2262
 www.interfaceengineering.com



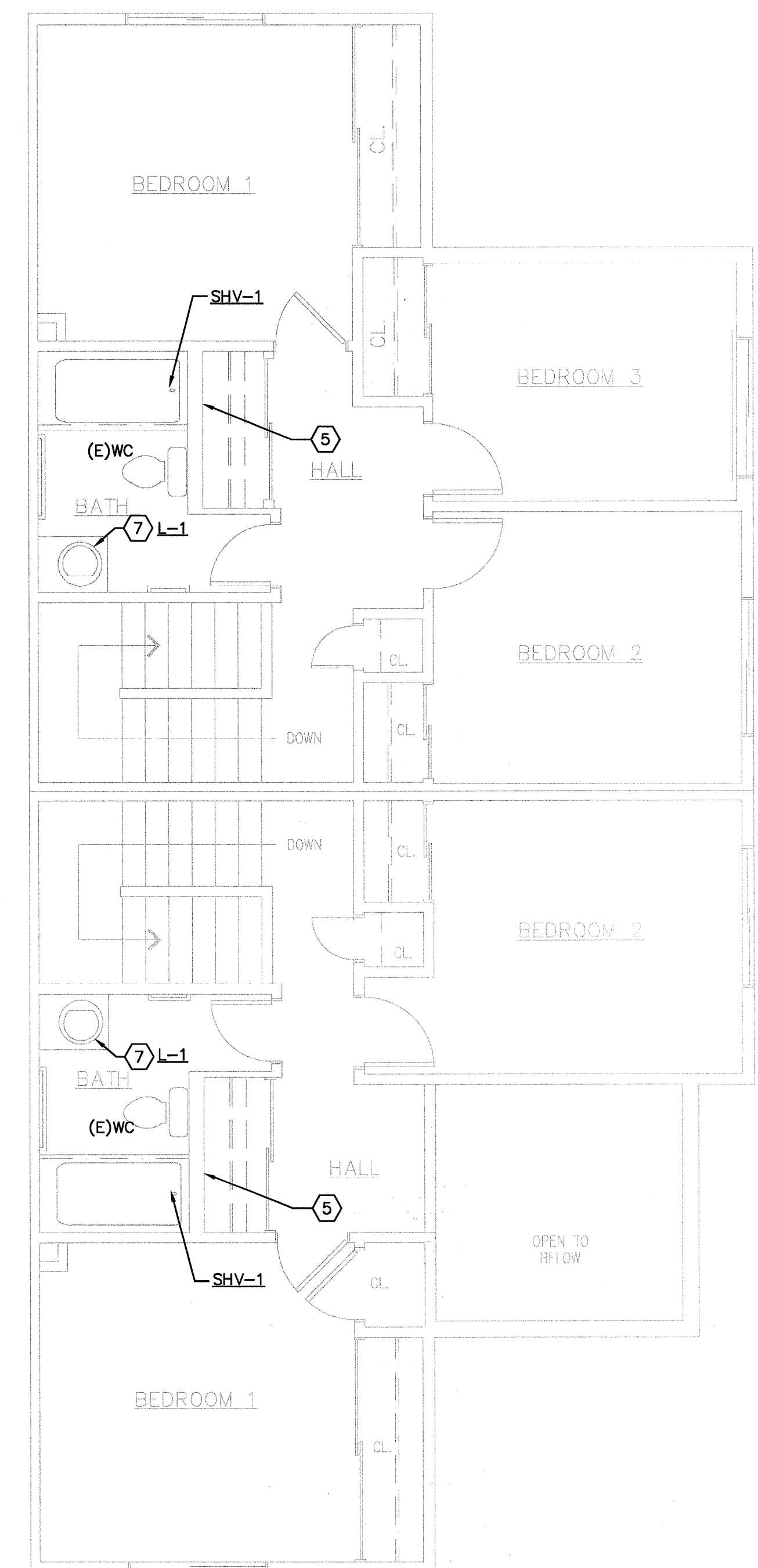
1
P-2
**DEMOLITION
FIRST FLOOR PLAN - PLBG**
0 2' 4' 8'
SCALE: 1/4"=1'-0"



2
P-2
**DEMOLITION
SECOND FLOOR PLAN - PLBG**
0 2' 4' 8'
SCALE: 1/4"=1'-0"



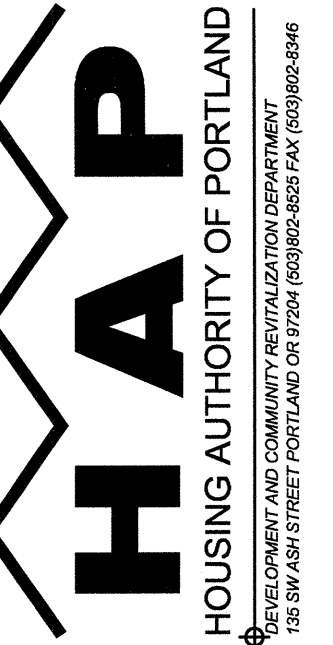
3
P-2
**NEW
FIRST FLOOR PLAN - PLBG**
0 2' 4' 8'
SCALE: 1/4"=1'-0"



4
P-2
**NEW
SECOND FLOOR PLAN - PLBG**
0 2' 4' 8'
SCALE: 1/4"=1'-0"

SHEET KEYNOTES

- EXISTING 1-1/4" WATER PIPING SERVING UNITS. REMOVE PIPING TO SLAB AND CONNECT NEW INCOMING SERVICE. ALL WATER PIPING TO BE REMOVED FROM UNIT AND REPLACED WITH NEW.
- CONNECT NEW WASTE AND VENT PIPING FROM WASHING MACHINE AND CONNECT TO EXISTING WASTE AND VENT AT KITCHEN SINK. ALL OTHER WASTE AND VENT PIPING IN UNIT TO REMAIN.
- EXISTING TOILET TO BE REMOVED AND REINSTALLED. INSTALL NEW WAX RING.
- ROUTE 3/4" PIPING FROM DRAIN PAN IN SOFFIT SPACE ALONG FLOOR TO BUILDING EXTERIOR. PROVIDE 90° ELBOW AND DISCHARGE TO GRADE.
- ACCESS SHOWER VALVE AND FIXTURE PIPING FROM BACK SIDE OF WALL.
- COORDINATE SHUT-OFF VALVE LOCATIONS WITH ACCESS PANEL PLANS. PROVIDE SEPARATE SHUT OFF VALVE FOR EACH UNIT IN WALL.
- PROVIDE NEW WASTE PIPING AT SINK WHERE PIPING IS EXPOSED UNDER FIXTURE. CONNECT TO EXISTING PIPING IN WALL.



EASTWOOD CT. AND CARLTON CT. MODERNIZATION
CARLTON - 5249 NE KILLINGSWORTH ST. PORT., OR. 97218
EASTWOOD - 18210 SE YAMHILL ST. PORT., OR. 97236

SITE AND DWELLING IMPROVEMENTS PROJECTS NO. RFB 01/10-96

SHEET TITLE
**DEMO & NEW
FOURPLEX PLANS
PLUMBING**

DATE: JUNE 2010
DRAWN BY: QB
FILE NAME: CARLTON/EASTWD.

REVISIONS	DATE

DRAWING NO.
P-2

SHEET NO.
X OF 1

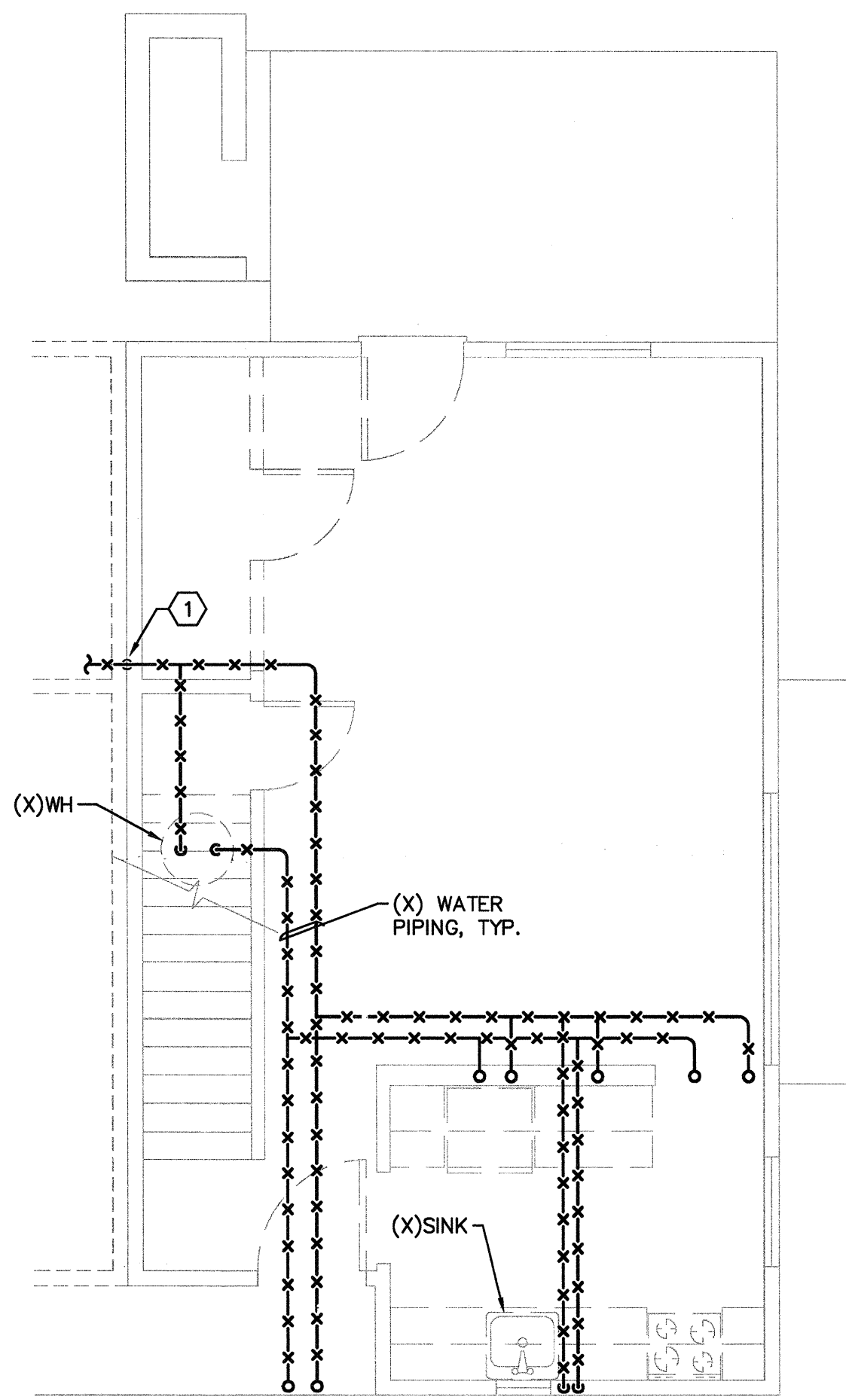
PROJECT 2010-0047
CONTACT CHRIS SCOTT
INTERFACE ENGINEERING
708 SW Third Avenue
Suite 400
Portland, OR 97204
TEL. 503.382.2266
FAX. 503.382.2262
www.interfaceengineering.com

○ SHEET KEYNOTES

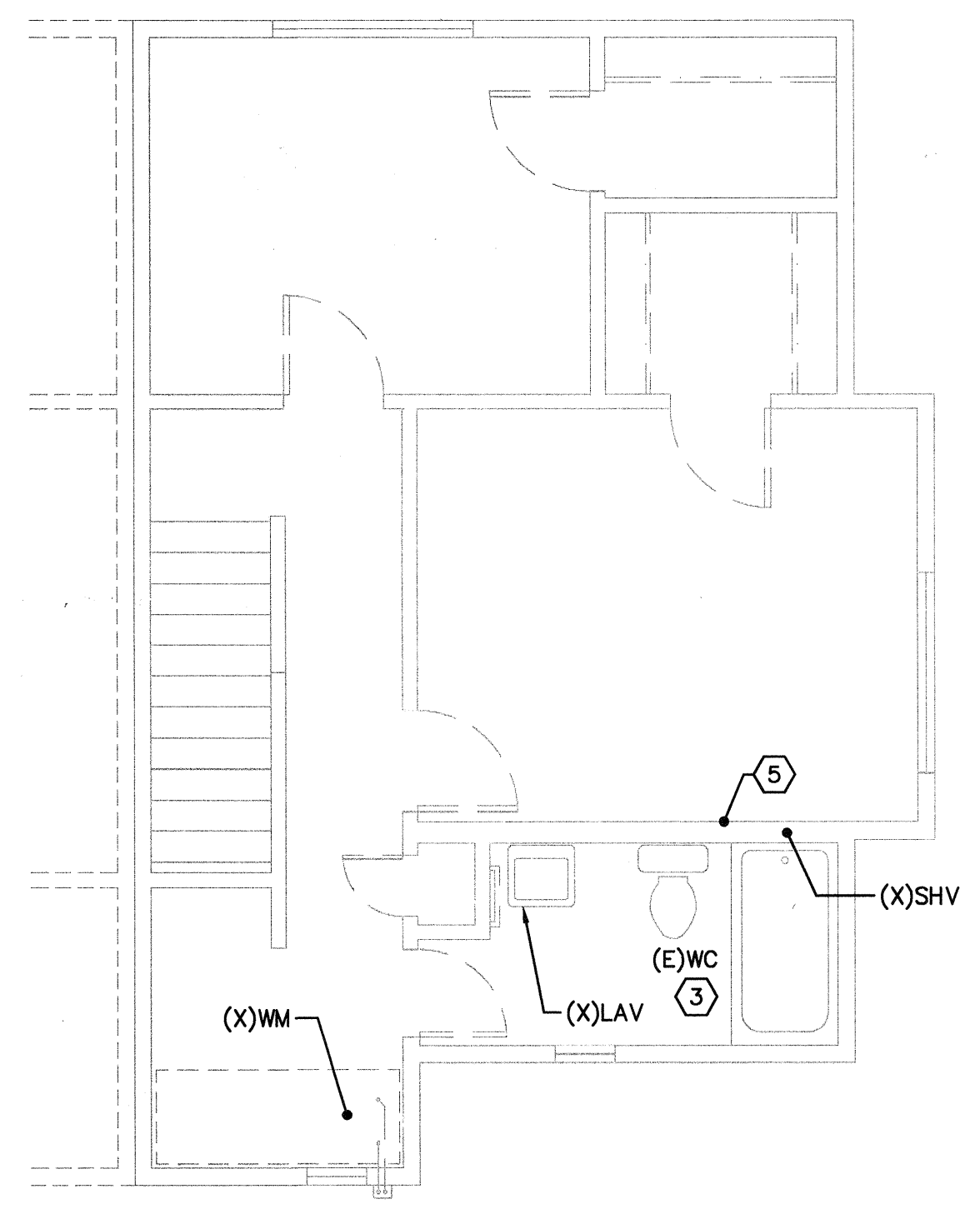
- 1 EXISTING 1-1/4" WATER PIPING SERVING UNITS. REMOVE PIPING TO SLAB AND CONNECT NEW INCOMING SERVICE. ALL WATER PIPING TO BE REMOVED FROM UNIT AND REPLACED WITH NEW.
- 2 CONNECT NEW WASTE AND VENT PIPING FROM WASHING MACHINE AND CONNECT TO EXISTING WASTE AND VENT AT KITCHEN SINK. ALL OTHER WASTE AND VENT PIPING IN UNIT TO REMAIN.
- 3 EXISTING TOILET TO BE REMOVED AND REINSTALLED. INSTALL NEW WAX RING.
- 4 ROUTE 3/4" PIPING FROM DRAIN PAN IN SOFFIT SPACE ALONG FLOOR TO BUILDING EXTERIOR. PROVIDE 90° ELBOW AND DISCHARGE TO GRADE.
- 5 ACCESS SHOWER VALVE AND FIXTURE PIPING FROM BACK SIDE OF WALL.
- 6 COORDINATE SHUT-OFF VALVE LOCATIONS WITH ACCESS PANEL LOCATION PER ARCHITECTURAL PLANS. PROVIDE SEPARATE SHUT OFF VALVE FOR EACH UNIT IN WALL.
- 7 PROVIDE NEW WASTE PIPING AT SINK WHERE PIPING IS EXPOSED UNDER FIXTURE. CONNECT TO EXISTING PIPING IN WALL.



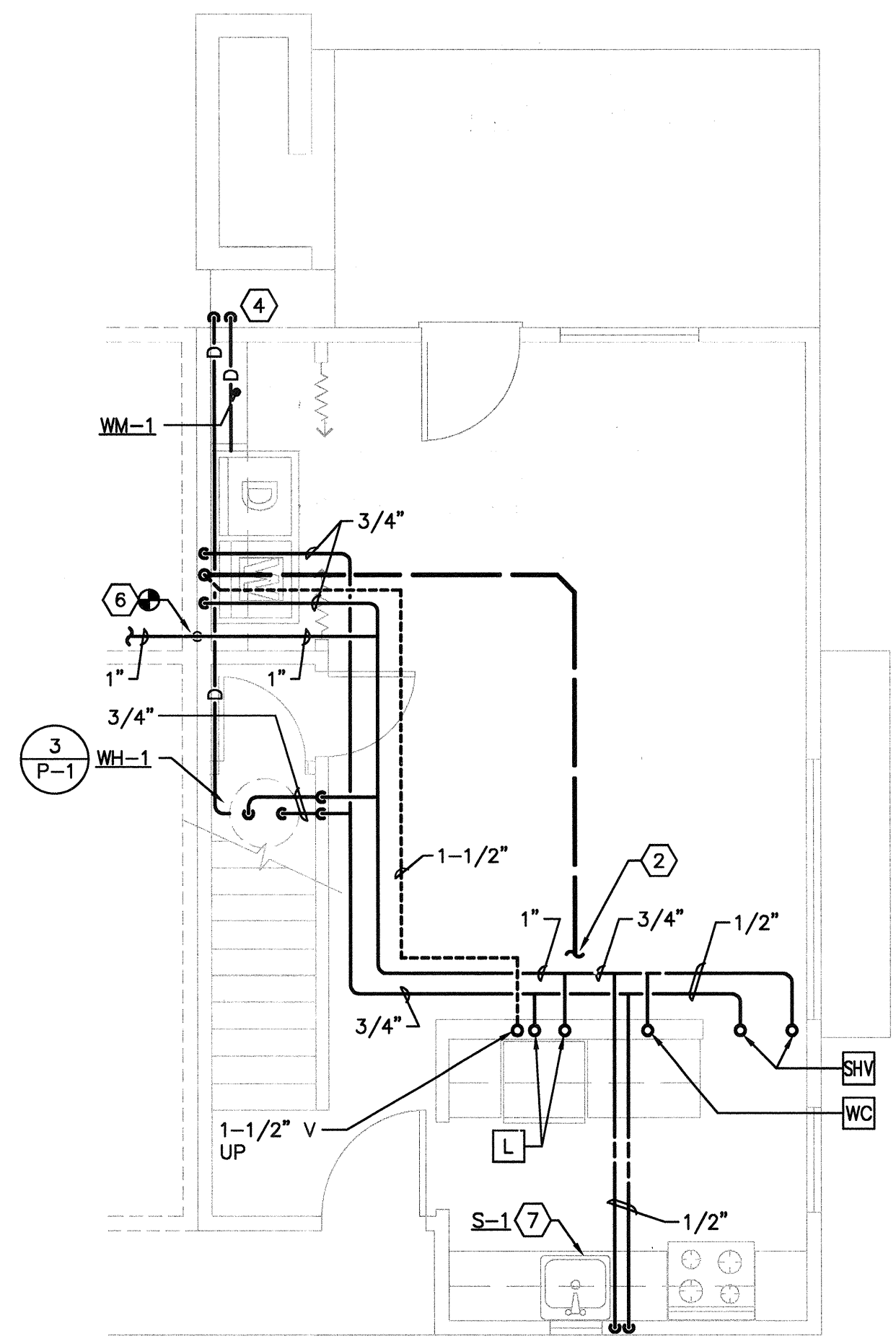
EASTWOOD CT. AND CARLTON CT. MODERNIZATION
 CARLTON - 5249 NE KILLINGSWORTH ST. PORT, OR 97218
 EASTWOOD - 18210 SE YAMHILL ST. PORT., OR. 97236
 PROJECTS NO. RFB 01/10-86
 SITE AND DWELLING IMPROVEMENTS



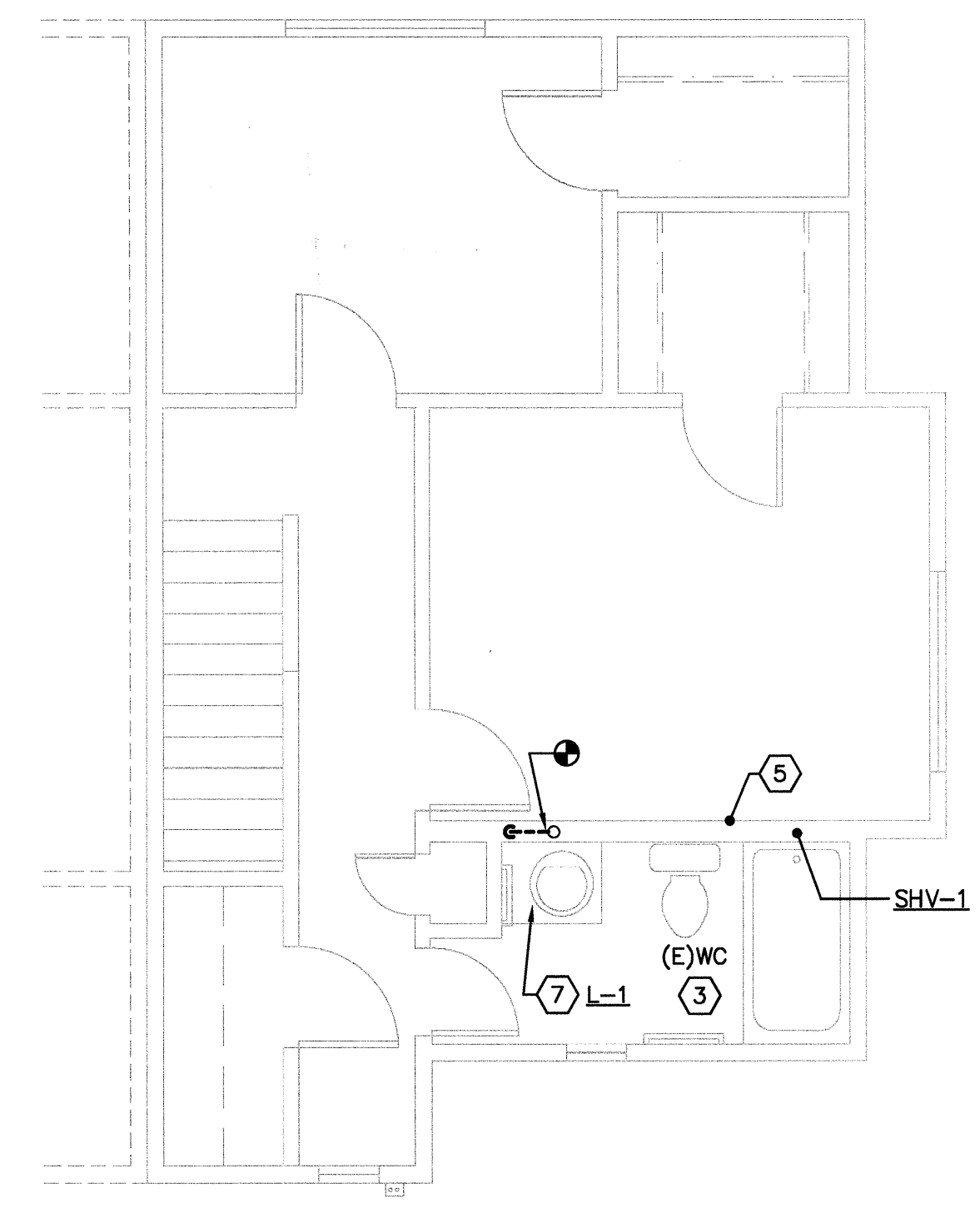
1
 DEMOLITION
 FIRST FLOOR PLAN - PLBG
 SCALE: 1/4"=1'-0"



2
 DEMOLITION
 SECOND FLOOR PLAN - PLBG
 SCALE: 1/4"=1'-0"



3
 NEW
 FIRST FLOOR PLAN - PLBG
 SCALE: 1/4"=1'-0"



4
 NEW
 SECOND FLOOR PLAN - PLBG
 SCALE: 1/4"=1'-0"

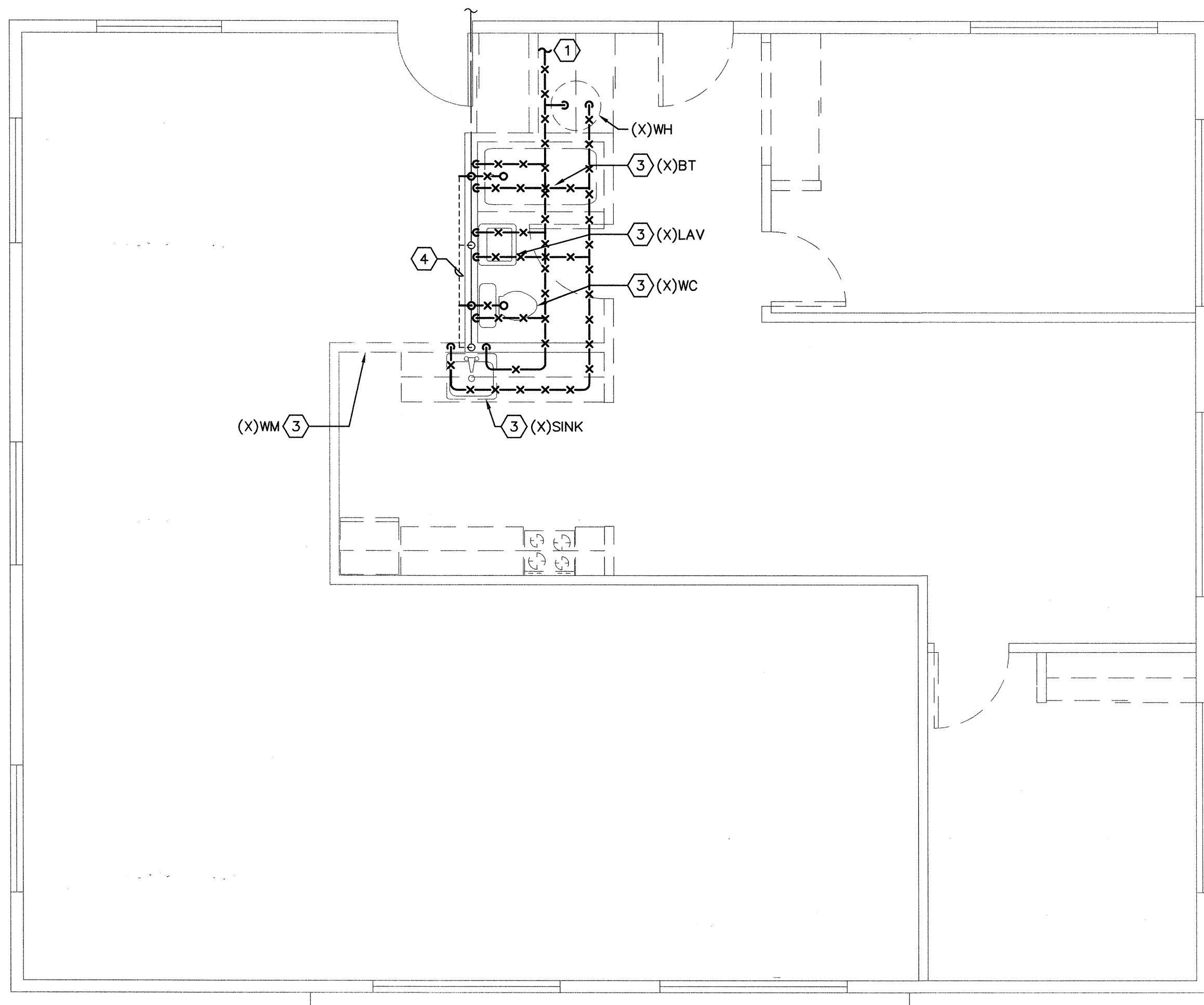
PROJECT 2010-0047
 CONTACT CHRIS SCOTT
INTERFACE
 ENGINEERING
 708 SW Third Avenue
 Suite 400
 Portland, OR 97204
 TEL: 503.382.2266
 FAX: 503.382.2262
 www.interfaceengineering.com

SHEET TITLE
**DEMO & NEW
 DUPLEX PLANS
 EASTWOOD CT.
 PLUMBING**

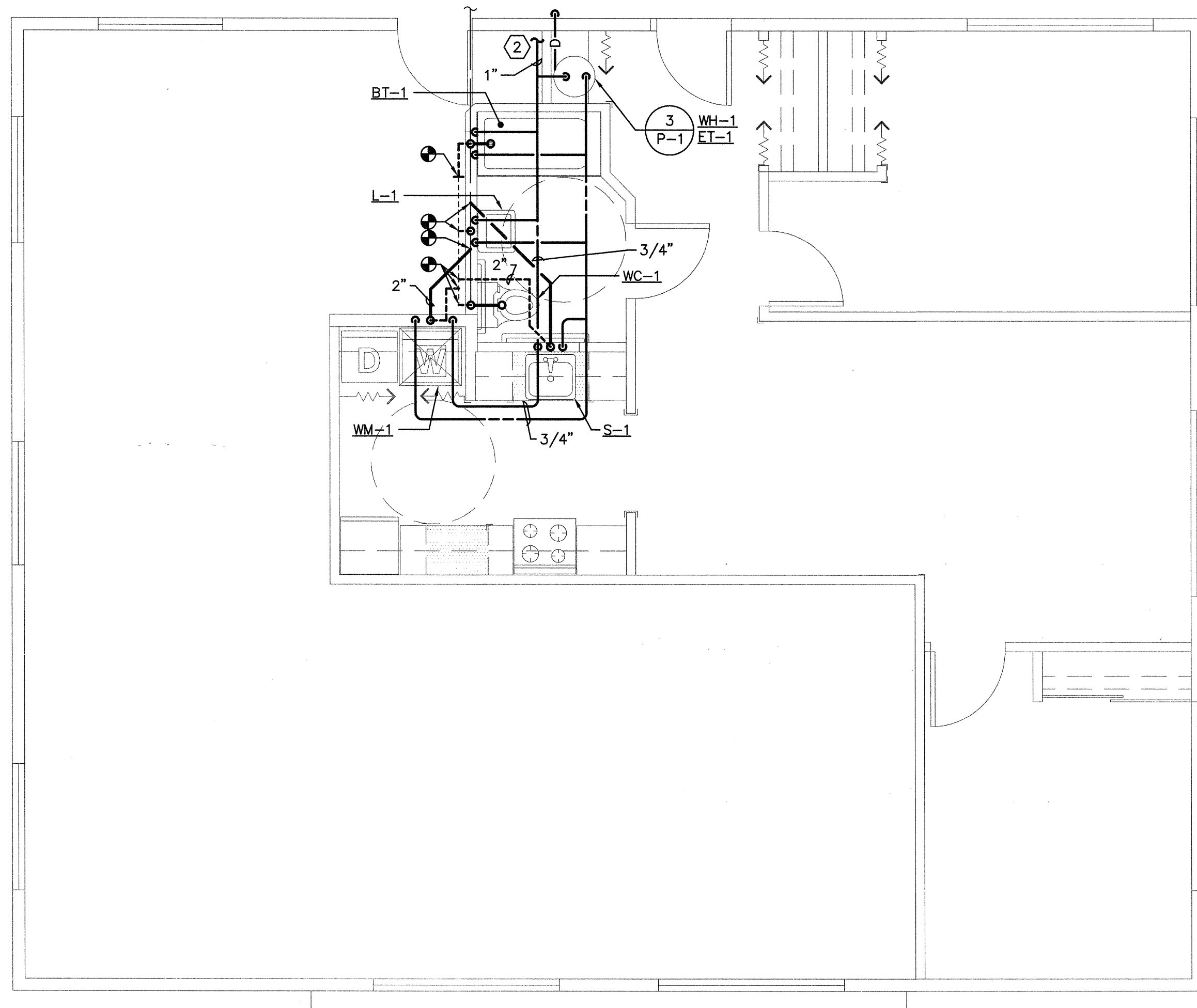
DATE: JUNE 2010
 DRAWN BY: QB
 FILE NAME: CARLTON/EASTWD.

REVISIONS	DATE

DRAWING NO.
P-3
 SHEET NO.
X OF 1



1
P-4
DEMOLITION FLOOR PLAN - PLBG
0 2' 4' 8'
SCALE: 1/4"=1'-0"



2
P-4
NEW FLOOR PLAN - PLBG
0 2' 4' 8'
SCALE: 1/4"=1'-0"

SHEET KEYNOTES

- 1 REMOVE COLD WATER PIPING BACK TO WHERE UNIT WATER PIPING ENTERS. VERIFY LOCATION.
- 2 CONNECT NEW COLD WATER AT LOCATION WHERE UNIT WATER PIPING ENTERS. VERIFY LOCATION.
- 3 EXISTING FIXTURE BEING REMOVED. REMOVE ALL ASSOCIATED WATER PIPING. MODIFY EXISTING WASTE AND VENT FOR NEW FIXTURE.
- 4 MODIFY EXISTING VENT PIPING AS NEEDED FOR NEW CONNECTIONS AND TO MAINTAIN EXISTING VENT THROUGH ROOF.

SYMBOL	DESCRIPTION	CONNECTION			
		W	V	CW	HW
BT-1	BATHTUB: 3-PIECE, GEL-COATED FIBERGLASS, 60 IN. BY 32 IN. BY 80-1/2 IN. SLIP RESISTANT FLOOR, COORDINATE DRAIN LOCATION WITH ARCHITECTURAL DRAWINGS. COMPLETE WITH THREE 24 IN. STAINLESS STEEL GRAB BARS FLORESTONE 3PC-60-31HTS ORDER WITHOUT FOLDING SEAT, MIXING VALVE AND SHOWER HEAD. BATH/SHOWER VALVE (ADA): C.P. METAL, SINGLE HANDLE, PRESSURE BALANCE, INTEGRAL VOLUME CONTROL, ADJUSTABLE LIMIT STOP, VACUUM BREAKER, 69" METAL HOSE, 30" SLIDE BAR, TUB SPOUT. MOEN 8341	2"	1-1/2"	1/2"	1/2"
ET-1	EXPANSION TANK: 2 GAL. CAPACITY, WELDED STEEL CONSTRUCTION, DIAPHRAGM TYPE, SEPARATE WATER RESERVOIR, PRE-PRESSURIZED, IAPMO CERTIFIED. AMTROL ST-5 REMARKS: INSTALL PER MANUFACTURER'S RECOMMENDATIONS.	---	---	SEE DWGS	---
L-1	LAVATORY: WALL HUNG, VITREOUS CHINA, 20-3/4" BY 18-3/4", FRONT OVERFLOW, BACKSPASH KOHLER K-2032 "GREENWICH" WITH 4 IN. CENTER FAUCET HOLES. FOR ADA COMPLIANT, PROVIDE INSULATION KIT TO P-TRAP AND SUPPLIES, SEE SPECIFICATIONS CARRIER: FLOOR MOUNTED WITH CONCEALED ARMS SMITH AS APPLICABLE FAUCET: LEVER HANDLE TYPE, 2 IN. CENTERS, C.P. METAL 2.2 GPM AERATOR, TEMPERATURE LIMIT STOPS, METAL POP-UP DRAIN, CHROME FINISH. MOEN 8465 FITTINGS: 1-1/4 IN. BY 1-1/2 IN. P-TRAP. SUPPLIES AND STOPS. FOR ADA COMPLIANT, PROVIDE INSULATION KIT TO P-TRAP AND SUPPLIES. SEE SPECIFICATIONS.	1-1/2"	1-1/2"	1/2"	1/2"
S-1	KITCHEN SINK (ADA): SINGLE COMPARTMENT, 18 GAUGE STAINLESS STEEL, SOUND DEADENED, 33 IN. LEFT TO RIGHT BY 21 IN. FRONT TO BACK SELF-RIMMING, THREE HOLE, LK-35 CUP STRAINERS. ELKAY LRAD 3321; 6-1/2 IN. DEEP FAUCET: KITCHEN DECK/SINGLE HANDLE TYPE, 4 IN. CENTERS, 9 IN. SWING SPOUT, AERATOR. MOEN 7300	2"	1-1/2"	1/2"	1/2"
WC-1	WATER CLOSET (ADA): FLOOR MOUNTED, TANK TYPE, 16-1/2 IN. HIGH ELONGATED BOWL, VITREOUS CHINA, BOLT CAPS, SUPPLY AND STOP, NIAGARA FLAPPERLESS N2226 SEAT: COMMERCIAL WEIGHT HEAVY-DUTY SOLID PLASTIC, STAINLESS STEEL CHECK HINGE, WHITE, CLOSED FRONT, WITH COVER. NIAGARA N21199E-MT	3"	2"	1/2"	---
WH-1	WATER HEATER: ELECTRIC, 50 GAL., SIMULTANEOUS 4500 WATT SINGLE DOUBLE ELEMENT, 21 GPH AT 90° F RISE, 140 LBS.. DRAIN VALVE, T & P VALVE. SET WATER HEATER TO 120°F A.O. SMITH PXHT 52 CONTRACTOR TO FABRICATE DRAIN PAN TO ACCOMMODATE SPACE	---	---	SEE	SEE
WM-1	WASHING MACHINE SUPPLY AND DRAIN: HOT AND COLD WATER PIPING BOTTOM SUPPLY CONNECTION WITH SHUT-OFF VALVES AND DRAIN RECEPTOR IN RECESSED METAL BOX. GUY GRAY FB200	2"	1-1/2"	1/2"	1/2"



EASTWOOD CT. AND CARLTON CT. MODERNIZATION
CARLTON - 5249 NE KILLINGSWORTH ST. PORT, OR 97218
EASTWOOD - 18210 SE YAMHILL ST. PORT., OR. 97236

SITE AND DWELLING IMPROVEMENTS PROJECTS NO. RFB 0110-86

SHEET TITLE
DEMO & NEW ADA UNIT PLANS EASTWOOD CT. PLUMBING

DATE: JUNE 2010
DRAWN BY: QB
FILE NAME: CARLTON/EASTWD.

REVISIONS	DATE

DRAWING NO.

P-4

SHEET NO.

X OF 1

PROJECT 2010-0047
CONTACT CHRIS SCOTT

708 SW Third Avenue
Suite 400
Portland, OR 97204
TEL 503.382.2266
FAX 503.382.2262
www.interfaceengineering.com