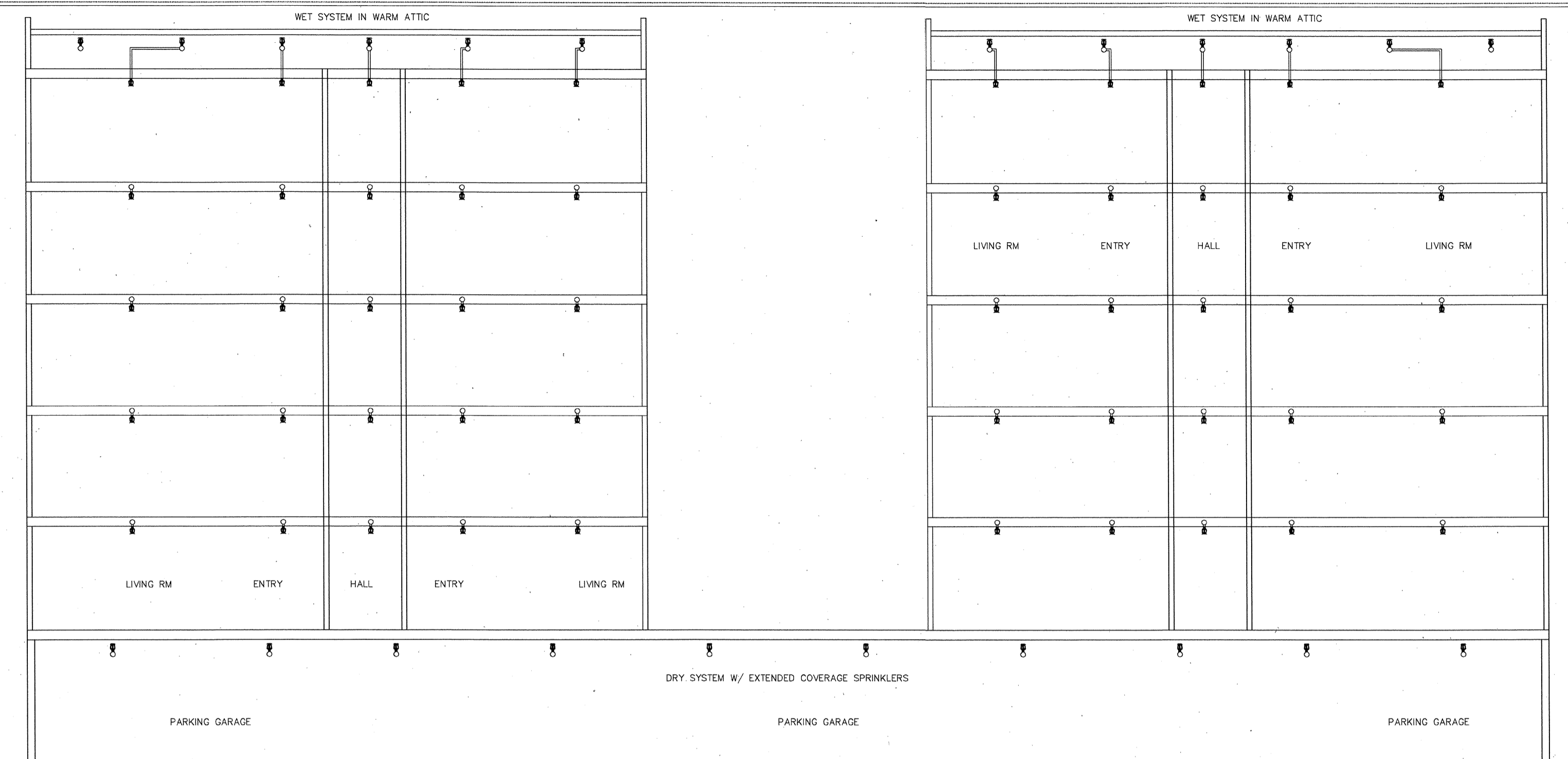


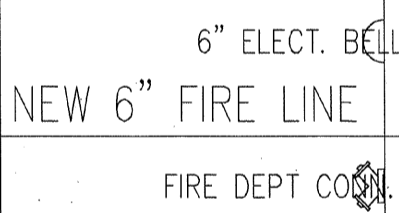
C:\DOCUMENTS\Korman\LOCALS-1\Temp\AcPublish\_4504\PETTYGROVE2.dwg\VP2.0 SITE-INFO korman\_06/22/10 14:03 s:1



BUILDING SECTION  
SCALE: 1/8" = 1'-0"

N. W. PETTYGROVE STREET

N. W. 20TH AVENUE



# PETTYGROVE BUILDING

**FLOW DATA-ACTUAL**

STATIC	66 PSI
RESIDUAL	62 PSI
FLOW:	2161 GPM
SOURCE:	PDX WTR

**FLOW DATA-FIRE 80%**

STATIC	58 PSI
RESIDUAL	54 PSI
FLOW:	2161 GPM
SOURCE:	PDX WTR

<b>Hydraulic Information</b>		<b>System Volume</b> 0.000	
Static Pressure	58.0	Flow Test Date	5-30-2005
Residual Pressure	54.0	Flow Test Location	NW 20TH & PETTYGROVE
Residual Flow	2161	Tested by	PDX WTR DEPT.
Test Elevation (Relative to Source Elevation)	0.000		
Tank Pressure	0.000	Available Well Flow	0.000
Tank Volume	0.000		
Tank Elevation	0'-0"	Pump Manufacturer	
Pump Rated Pressure	0.000	Pump Model	
Pump Rated Flow	0.000		
Pump Elevation	0'-0"		
Construction	WOOD	Occupancy	RESIDENT/MIXED
Authorities Having Jurisdiction	PORTLAND		



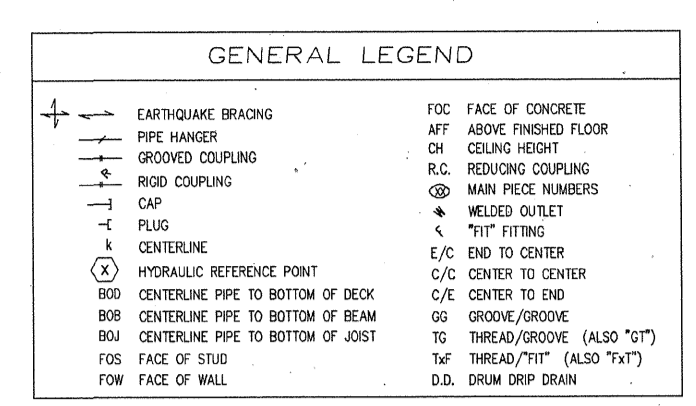
**MAXIMUM DISTANCE BETWEEN HANGERS**

NOMINAL PIPE SIZE (in.)	1"	1-1/4"	1-1/2"	2"	2-1/2"	3"	4"
STEEL PIPE	12-0	12-0	15-0	15-0	15-0	15-0	15-0
NOMINAL PIPE SIZE (in.)	3/4"	1"	1-1/4"	1-1/2"	2"	2-1/2"	3"
CPVC PIPE	5-6	6-0	6-6	7-0	8-0	9-0	10-0

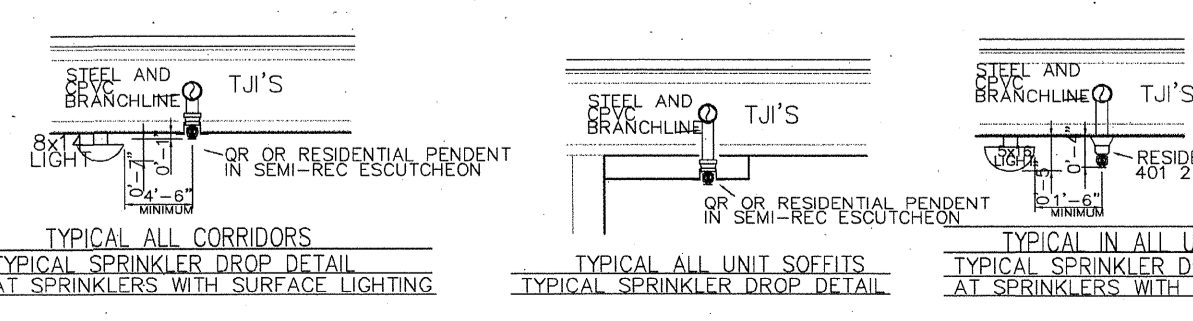
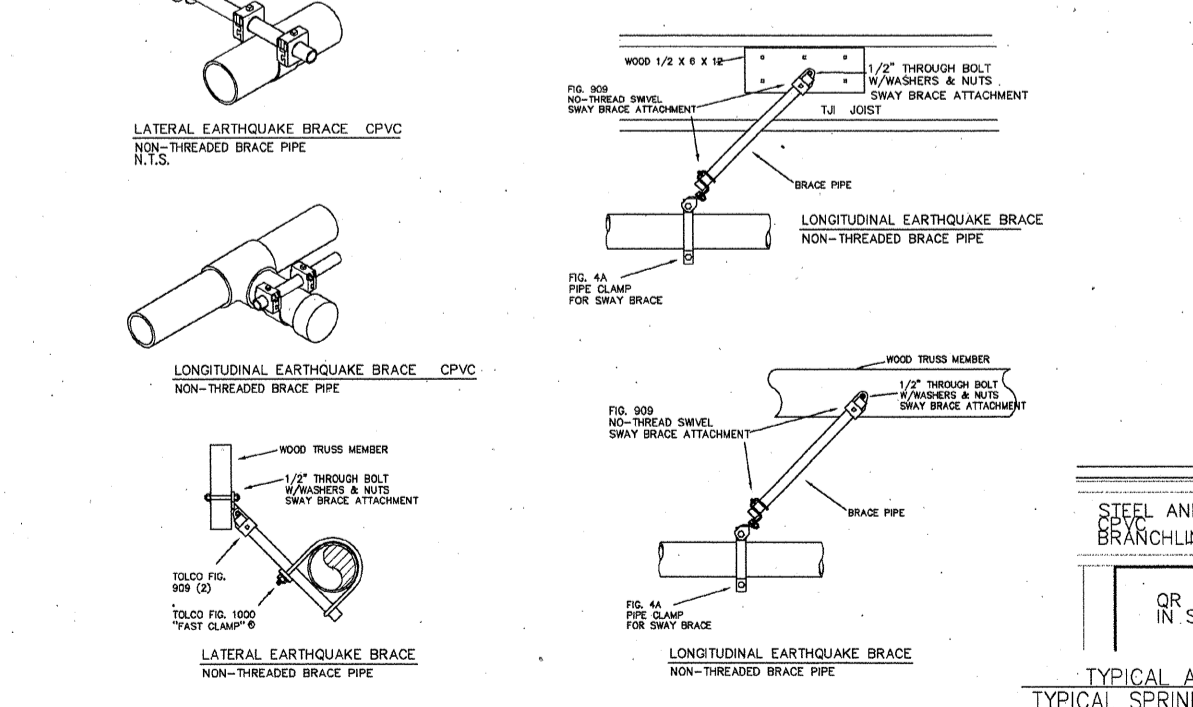
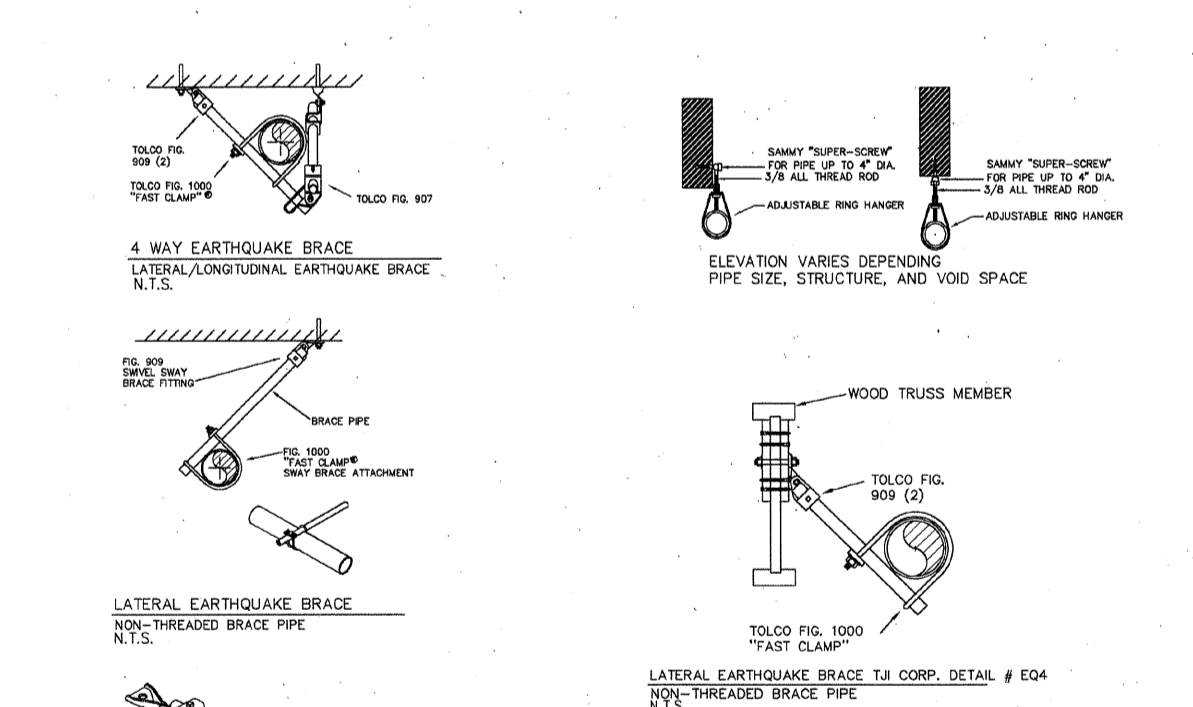
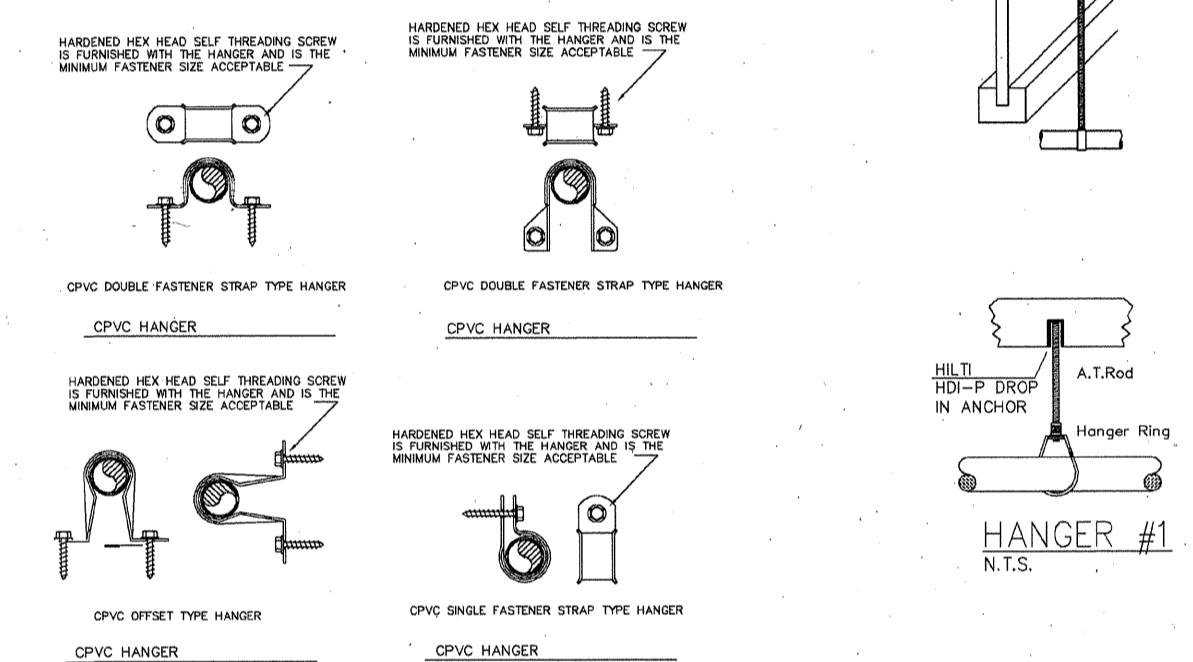
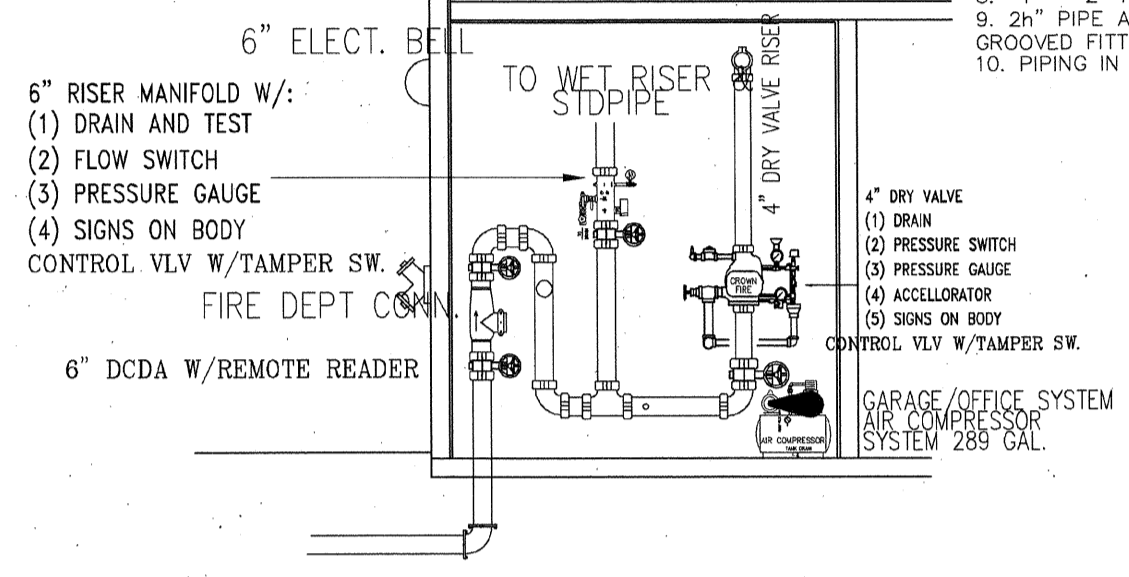
**EARTH QUAKE PIPE BRACE SCHEDULE**

PIPE (SCH. 40)	MAX. LENGTH OF BRACE
1-INCH	7 FT. 0 IN.
1 1/4-INCH	9 FT. 0 IN.
1 1/2-INCH	15 FT. 6 IN.
2-INCH	19 FT. 6 IN.

MAXIMUM LENGTHS FOR BRACING SHOWN ARE BASED ON SCHEDULE 40 PIPE BRACES AND 45 ATTACHMENT ANGLE BRACING SPRINKLER SYSTEMS HAVING 4" CROSS MAINS 1" TO 2" BRANCH-LINES.



- GENERAL NOTES**
- SPRINKLER SYSTEM DESIGN PER N.F.P.A. #13 AND 13R.
  - ALL MATERIALS SHALL BE NEW AND LISTED OR F.I.M. APPROVED.
  - FIRE SPRINKLER SYSTEM TO BE INSTALLED, BRACED AND TESTED IN ACCORDANCE WITH N.F.P.A. #13 AND 13R.
  - IN LOCALITIES SUBJECT TO FREEZING CONDITIONS IT IS THE OWNERS RESPONSIBILITY TO PROVIDE HEAT THROUGHOUT THE WET PIPE SPRINKLER SYSTEM AREAS AND IN ENCLOSURES FOR DRY PIPE DELUGE AND OTHER TYPES OF VALVES CONTROLLING WATER SUPPLIES TO SPRINKLER SYSTEMS.
  - FIRE PROTECTION CONTRACTOR SHALL NOT BE RESPONSIBLE FOR THE ABILITY OF THE STRUCTURE TO ADEQUATELY SUPPORT THE FIRE SPRINKLER SYSTEM OR ANY APPURTENANCES THEREOF.
  - ALL ELECTRICAL, PRIME/PAINTING OF PIPE, FURRING, CUTTING OR PATCHING TO BE BY OTHERS.
  - SPRINKLER HEADS ARE NOT NECESSARILY LOCATED IN CENTER POINT OR QUARTER POINT OF CEILING TILE.
  - 1" - 2" PIPING TO BE THREADABLE LIGHTWALL WITH THREADED OUTLETS.
  - 2" PIPE AND ABOVE TO BE SUPER FLO/DYNA-FLOW WITH WELDED OUTLETS AND GROOVED FITTINGS AND COUPLINGS.
  - PIPING IN RESIDENTIAL PORTIONS OF THE BUILDINGS WILL BE CPVC



SYN	UNIT	POSITION	FINISH	TEMP	K	INPT	SN	IMPC	MODEL#
156	UPR	BRASS	200	5.60	1/2"	TY0431	TY00		TY-FRB
157	UPR	BRASS	200	5.60	1/2"	TY0431	TY00		TY-FRB
158	UPR	BRASS	200	5.60	1/2"	TY0431	TY00		TY-FRB
159	UPR	BRASS	200	5.60	1/2"	TY0431	TY00		TY-FRB
160	UPR	BRASS	200	5.60	1/2"	TY0431	TY00		TY-FRB
161	UPR	BRASS	200	5.60	1/2"	TY0431	TY00		TY-FRB
162	UPR	BRASS	200	5.60	1/2"	TY0431	TY00		TY-FRB
163	UPR	BRASS	200	5.60	1/2"	TY0431	TY00		TY-FRB
164	UPR	BRASS	200	5.60	1/2"	TY0431	TY00		TY-FRB
165	UPR	BRASS	200	5.60	1/2"	TY0431	TY00		TY-FRB
166	UPR	BRASS	200	5.60	1/2"	TY0431	TY00		TY-FRB
167	UPR	BRASS	200	5.60	1/2"	TY0431	TY00		TY-FRB
168	UPR	BRASS	200	5.60	1/2"	TY0431	TY00		TY-FRB
169	UPR	BRASS	200	5.60	1/2"	TY0431	TY00		TY-FRB
170	UPR	BRASS	200	5.60	1/2"	TY0431	TY00		TY-FRB
171	UPR	BRASS	200	5.60	1/2"	TY0431	TY00		TY-FRB
172	UPR	BRASS	200	5.60	1/2"	TY0431	TY00		TY-FRB
173	UPR	BRASS	200	5.60	1/2"	TY0431	TY00		TY-FRB
174	UPR	BRASS	200	5.60	1/2"	TY0431	TY00		TY-FRB
175	UPR	BRASS	200	5.60	1/2"	TY0431	TY00		TY-FRB
176	UPR	BRASS	200	5.60	1/2"	TY0431	TY00		TY-FRB
177	UPR	BRASS	200	5.60	1/2"	TY0431	TY00		TY-FRB
178	UPR	BRASS	200	5.60	1/2"	TY0431	TY00		TY-FRB
179	UPR	BRASS	200	5.60	1/2"	TY0431	TY00		TY-FRB
180	UPR	BRASS	200	5.60	1/2"	TY0431	TY00		TY-FRB

**ACROWN FIRE SYSTEMS**  
7402 S.E. JOHNSON CREEK BLVD.  
PORTLAND, OR 97206  
PH. 503.777.5030 FX. 777-0659  
METRO LIC# (002366)  
CCB #163820

**wilson architects pc**  
1010 SW BELMONT AVENUE, FORTLAND, OREGON 97106  
(503) 225-6695 fax (503) 274-0026 www.wilsonarch.com

PETTYGROVE  
1984 N.W. PETTYGROVE ST.  
PORTLAND, OREGON

PHASE TWO DEVELOPMENT  
131 NORTH STATE STREET, SITE G  
LAKE OSWEGO, OREGON 97034

SITE-NOTES  
FIRE SPRKLR'S

REVISIONS:

DATE: 12/02/09  
SCALE: 1/8"=1'-0"  
DRAWN:  
JOB NO: 0834

FP2.0